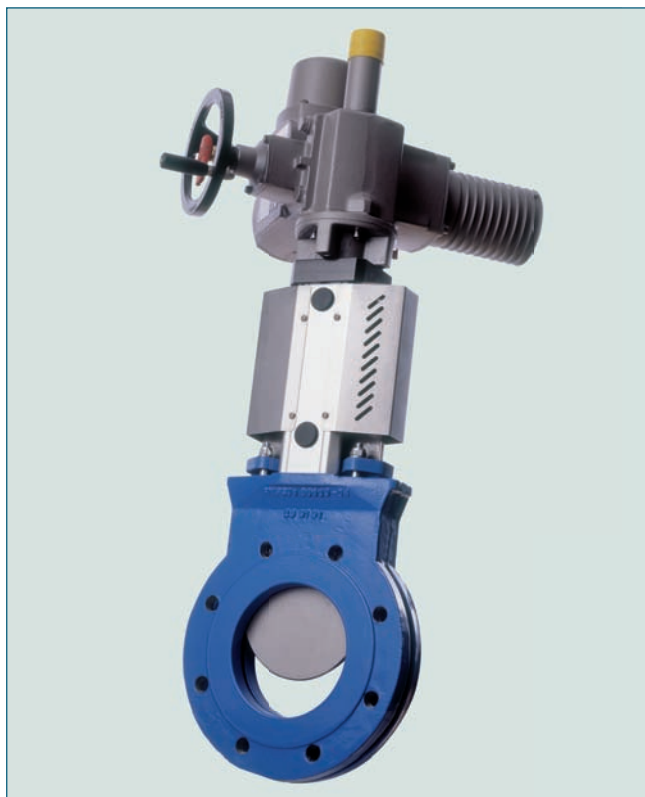


KNIFE GATE VALVE TYPE BV



The knife gate valve BV is designed, manufactured, inspected and tested according European Pressure Equipment Directive (PED 97/23/EC), category II module A1 and therefore CE marked.

TECHNICAL DATA

Nominal diameter:	DN 80 - DN 600
Face-to-face:	DIN 3202-K1
Flange drilling:	EN 1092 PN 10
Marking:	DIN EN 19
Tightness check:	ISO 5208, class A TAPPI TIS 405-8, MSS SP-81
Temperature range:	max. 100°C
Actuators:	Hand wheel, ratchet wrench, chain wheel, bevel gear, pneumatic cylinder, electric motor, hydraulic cylinder
Operating pressure:	DN 80 - DN 250: 10 bar DN 300 - DN 350: 6 bar DN 400: 4 bar DN 500 - DN 600: 2,5 bar

FEATURES

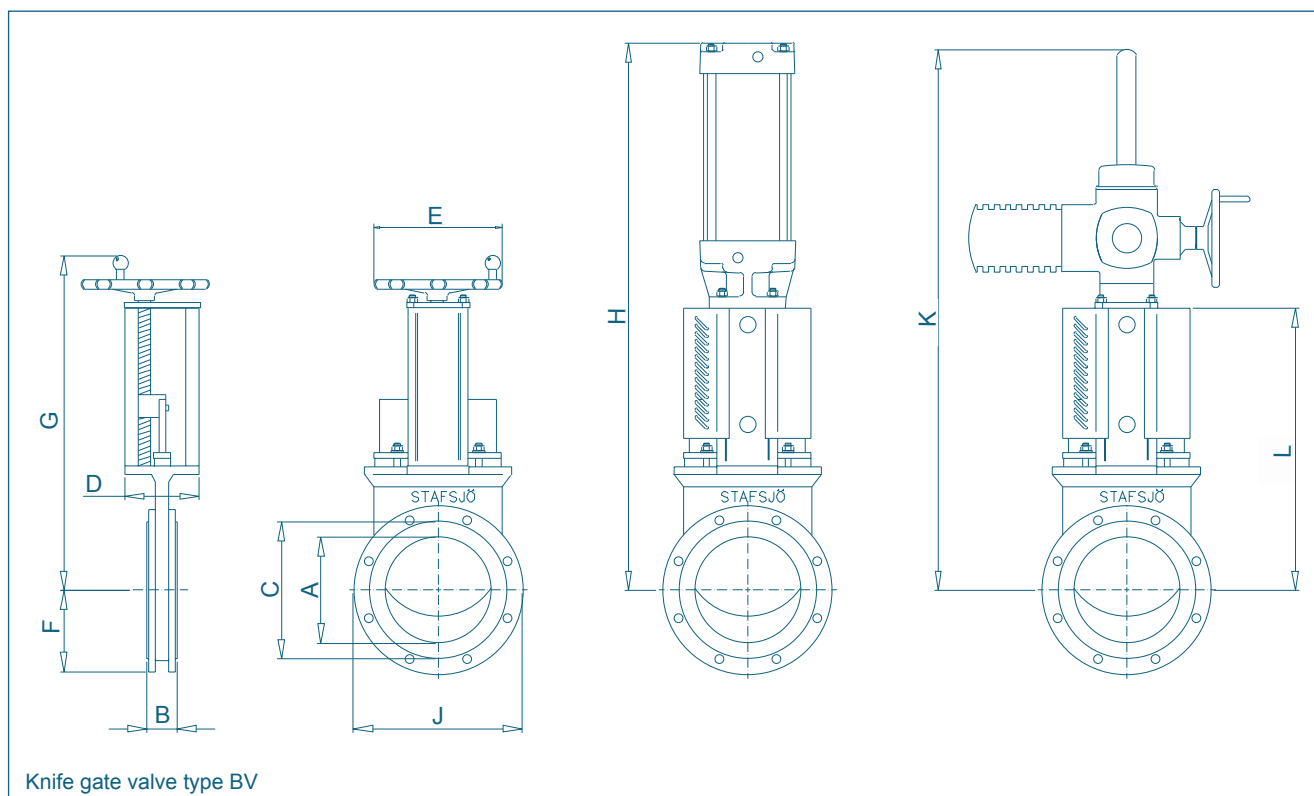
- Box packing TwinPack™ gives high operation reliability
- One-side lugging, bi-directional sealing
- Low maintenance
- Can be disassembled, material specific recycling possible

GENERAL APPLICATIONS:

- Water and waste water



KNIFE GATE VALVE TYPE BV

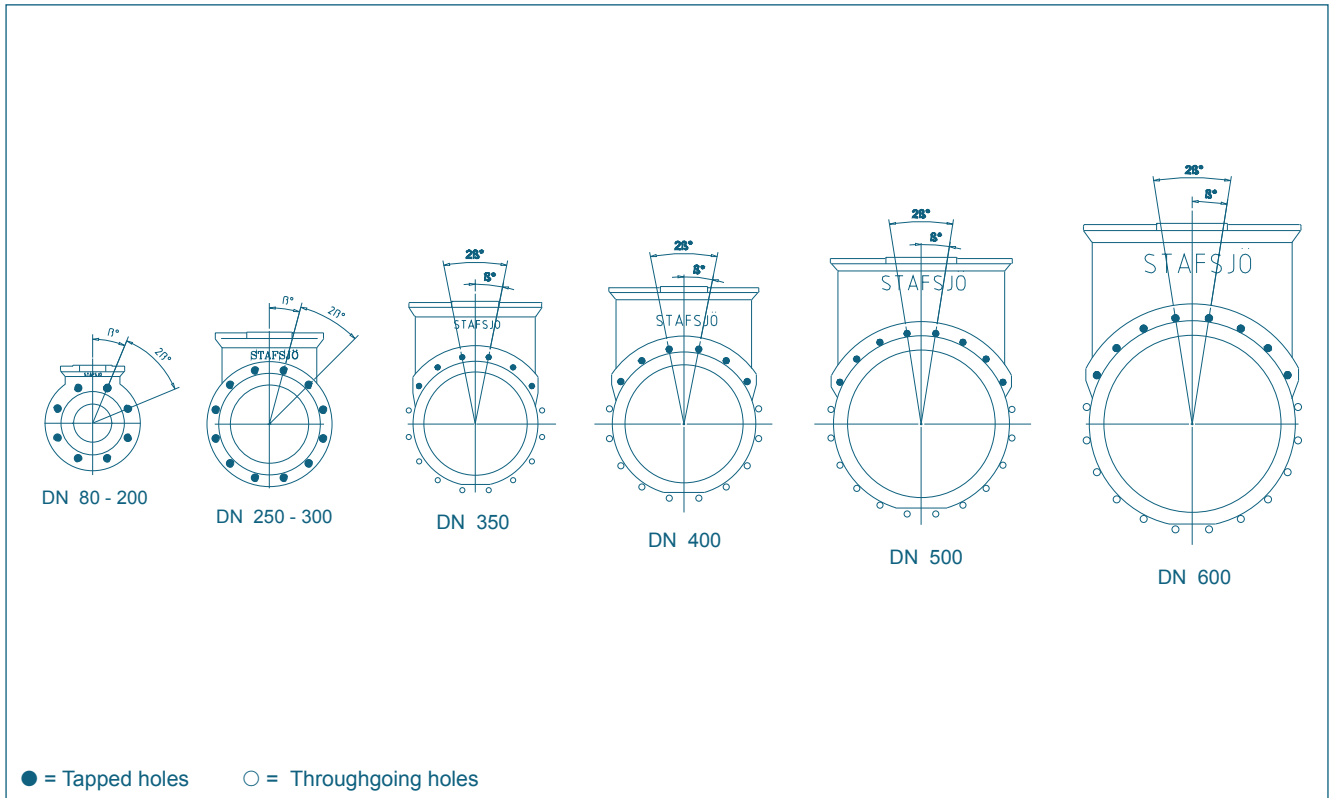


DN [mm]	Size [in]	Dimensions [mm]											Air supply	Hand wheel weight
		A	B	C	D	E	F	G	H	J	K	L		
80	3	80	46	126	80	200	100	349	547	200	470	277	1/4"	12
100	4	100	52	151	80	200	115	394	592	229	535	322	1/4"	15
125	5	125	56	182	80	200	127	502	692	254	611	372	1/4"	21
150	6	150	56	212	80	200	143	560	750	285	695	430	1/4"	26
200	8	200	60	262	145	315	172	699	1017	343	874	560	1/2"	42
250	10	250	68	324	145	315	203	801	1115	406	1029	660	1/2"	58
300	12	300	78	368	145	315	223	904	1275	445	1195	765	1/2"	80
350	14	350	78	423	175	400	206	1005	1552	450	1399	907	1/2"	115
400	16	400	102	486	175	400	238	1105	1702	508	1559	1007	1/2"	159
500	20	500	127	596	250	520	285	1369	2170	617	1908	1245	1/2"	291
600	24	600	154	698	250	635	340	1586	2440	737	2225	1460	1"	464

Actuator EM is rotated 45° for DN 80-150

Subject to change without notice

FLANGE DRILLINGS BV



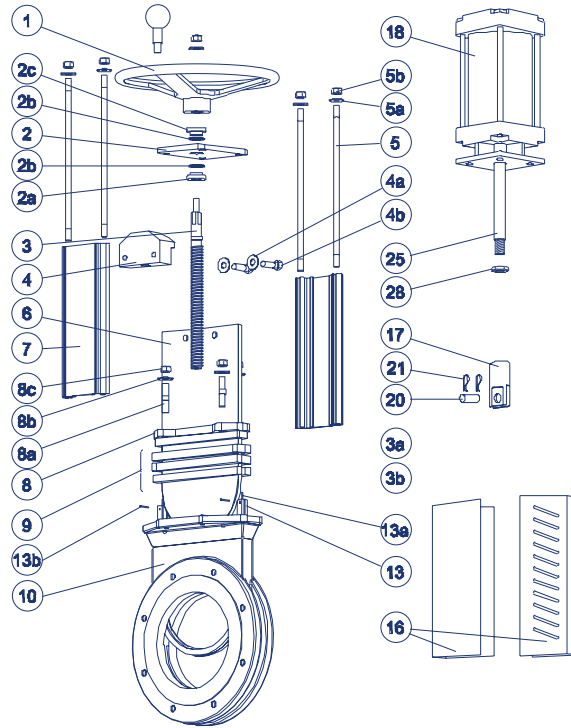
Size DN [mm]	80	100	125	150	200	250	300	350	400	500	600
Outside flange diameter [mm]	200	229	254	285	343	406	445	505	565	670	780
Bolt circle diameter [mm]	160	180	210	240	295	350	400	460	515	620	725
Face-to-face dimensions [mm]	46	52	56	56	60	68	78	78	102	127	154
No. of throughgoing holes [○]	-	-	-	-	-	-	-	10	10	12	12
No. of tapped holes/side [●]	8	8	8	8	8	12	12	6	6	8	8
Bolt size	M16	M16	M16	M20	M20	M20	M20	M20	M24	M24	M27
β°	22,5	22,5	22,5	22,5	22,5	15	15	11,25	11,25	9	9
Screw lengths ¹⁾	12	14	16	14	16	16	18	17	22	25	30

¹⁾ Add the values in the table with the thickness of the pipe flanges, the washers and the estimated thickness of the gasket.

Subject to change without notice

KNIFE GATE VALVE TYPE BV

MATERIAL SPECIFICATION AND PARTS LIST



Pos.	Description	Material	Material-No.	ASTM	Pos.	Description	Material	Material-No.	ASTM
1	Hand wheel				8	Gland			
	Aluminium	AlSi9Cu3(Fe)				Cast iron	GG 25	0.6025	AA48No40B
2	Yoke				8a	Stud bolt			
	Stainless steel	X5CrNi18 M 10	1.4301			A2, zinc	X5CrNi18 M 10	1.4301	
2a	Bearing				8b	Washer			
	Brass	CuZn39Pb3		C 36000		Stainless steel	X5CrNi18 M 10	1.4301	
2b	Slide washer				8c	Nut			
	POM					A2, zinc	X5CrNi18 M 10	1.4301	
2c	Bearing				9	Box packing*			
	Brass	CuZn39Pb3		C 36000		Twin Pack™			
3	Stem				10	Valve body			
	Stainless steel	X6Cr17	1.4016			Cast iron	GG 25	0.6025	
3a	Stop washer				13	Sealing profile*			
	Stainless steel	X6Cr17	1.4016			Nitril			
3b	Screw				13a	Steel wire*			
	Stainless steel	X5CrNi18 M 10	1.4301			Stainless steel			
4	Stem nut				16	Gate guard, not for HW			
	Brass	CuZn39Pb3		C 36000		Stainless steel	X5CrNi18 M 10	1.4301	
4a	Washer				17	Gate clevis			
	Stainless steel	X5CrNi18 M 10	1.4301			Stainless steel	X10CrNiS 18-9	1.4305	
4b	Screw				18	Cylinder			
	Stainless steel	X5CrNi18 M 10	1.4301			See data sheet			
5	Tie rod				20	Clevis pin			
	Stainless steel	X5CrNi 18 M 10	1.4301			Stainless steel	X10CrNiS 18-9	1.4305	
5a	Washer				21	Split pin			
	Stainless steel	X5CrNi18 M 10	1.4301			Stainless steel			
5b	Nut				25	Piston rod			
	Stainless steel	X5CrNi18 M 10	1.4301			Stainless steel	X12CrMoS17	1.4104	
6	Gate				28	Locking nut			
	Stainless steel	X5CrNi18 M 10	1.4401			Stainless steel	X10CrNiS 18-9	1.4305	
7	Beam								
	Aluminium	AlMgSi 0,5		AA 6063					

* Recommended spare parts

Subject to change without notice

www.ebro-armaturen.com
post@ebro-armaturen.com

02.2006 1.0 LD