

CONTAINER VALVE BE 50/BE 80



Container valve BE 50 with drain bolt lock

TECHNICAL DATA

Nominal diameter:	DN 50/80
Face-to-face:	EBRO works standard
Flange accommodation:	according to the connections in container building
Flange Surface Design:	DIN 2526, Form A-E, ANSI RF
Marking:	DIN EN 19
Tightness check:	DIN 3230 T3 BO, BN (Leakage Rate 1) ISO 5208, Category 3 API 598 Table 5 ANSI B 16-104, Class VI
Temperature range:	-20 °C to + 160 °C (depending on pressure and medium)
Operating pressure:	max. 4 bar
Differential pressure:	max. Δp 4 bar
Body:	Aluminiumalloy Cast Iron (BE 80)
Seat:	PTFE
Disc:	Stainless Steel

FEATURES

- Shut-off valve for lugging under containers
- Aluminiumbody
- Multiple shaft bearing
- Maintenance-free
- Can be disassembled, material-specific recycling possible

GENERAL APLLICATIONS

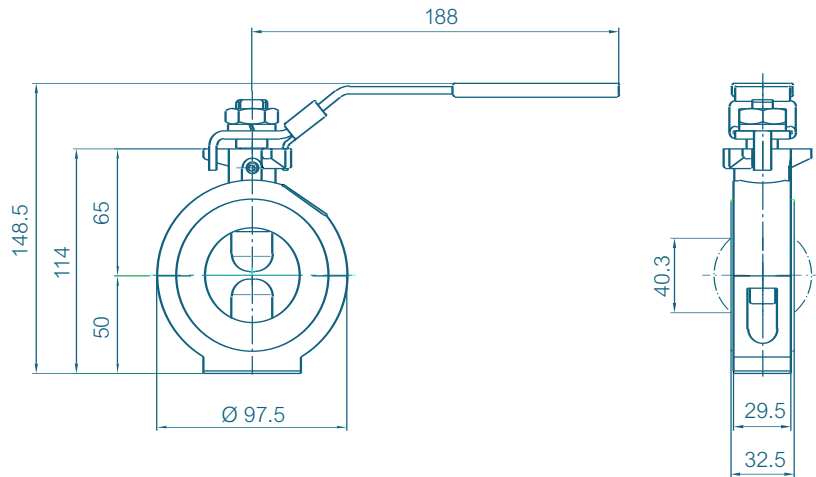
- Container building
- Silos
- Hardous freight container for varnishes, colours, solvents, resins



Container valve BE 80 with Open/Close lever

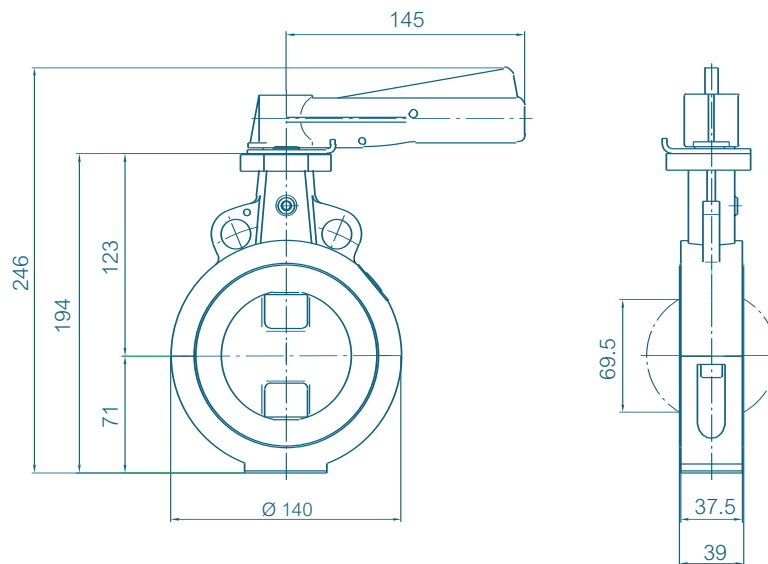
CONTAINER VALVE BE 50/BE 80

BE 50 WITH DRAIN BOLT LOCK



Weight: 0,95 kg

BE 80 WITH HAND LEVER



Weight: 2,05 kg

Subject to change without notice.

CONTAINER VALVE BE 250/BE 300



Container valve BE 250 with drain bolt lock

TECHNICAL DATA

Nominal diameter:	DN 250/300
Face-to-face:	EBRO works standard
Flange accomodation:	according to the connections in container building
Flange surface design:	DIN 2526, Form A-E, ANSI RF
Marking:	DIN EN 19
Tightness check:	DIN 3230 T3 BO, BN (Leakage Rate 1) ISO 5208, Category 3 API 598 Table 5 ANSI B 16-104, Class VI
Temperature range:	-20 °C to +160 °C (depending on pressure and medium)
Operating pressure:	max. 1 bar
Differential pressure:	max. Δp 1 bar
Body:	Aluminiumalloy
Seat:	EPDM (Ethylene propylene caoutchouc) NBR (Acrylonitrile butadiene rubber) FPM (Fluorocarbon caoutchouc) AU (Polyurethane)
Disc:	Stainless Steel

FEATURES

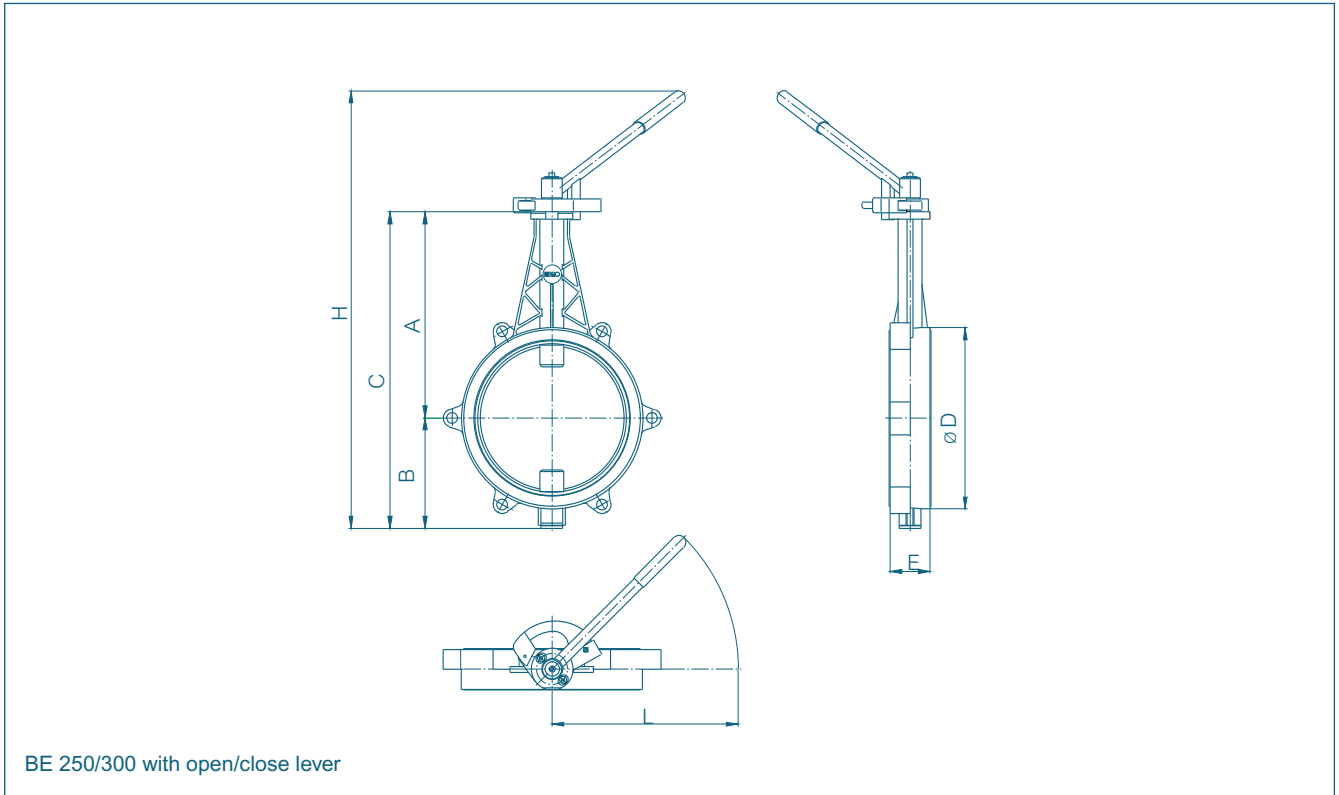
- Shut-off valve for lugging under containers
- Aluminium body
- Suitable for conical containers
- Possibilities for hand operation:
 - drain bolt lock
 - tilting lever
 - engage lever Open/Close
- Multiple shaft bearing
- Maintenance-free
- Can be disassembled, material-specific recycling possible

GENERAL APPLICATIONS

- Container building
- Silos



CONTAINER VALVE BE 250/BE 300



DN [mm]	Size [in]	Dimensions [mm]							Weight [kg]
		A	B	C	D	E	H	L	
250	10	346	185	531	304	68	778	384	6,2
300	12	274	226	500	355	78	742	384	8,9

Subject to change without notice.